

Service Document Exchange Set

GDP 1400

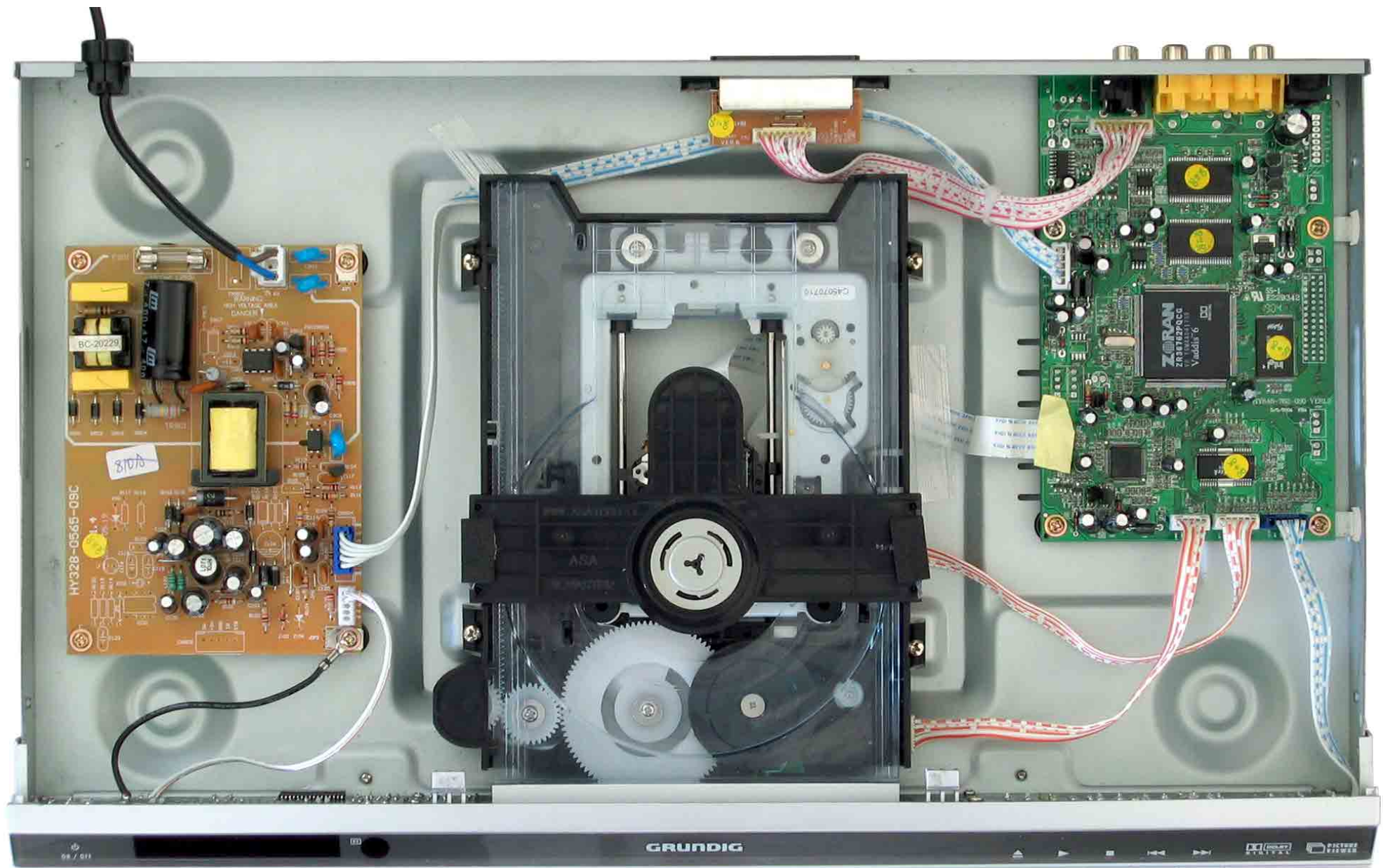
**Service
Manual**
**Sicherheit
Safety**
Materialnr./Part No.
720108000001

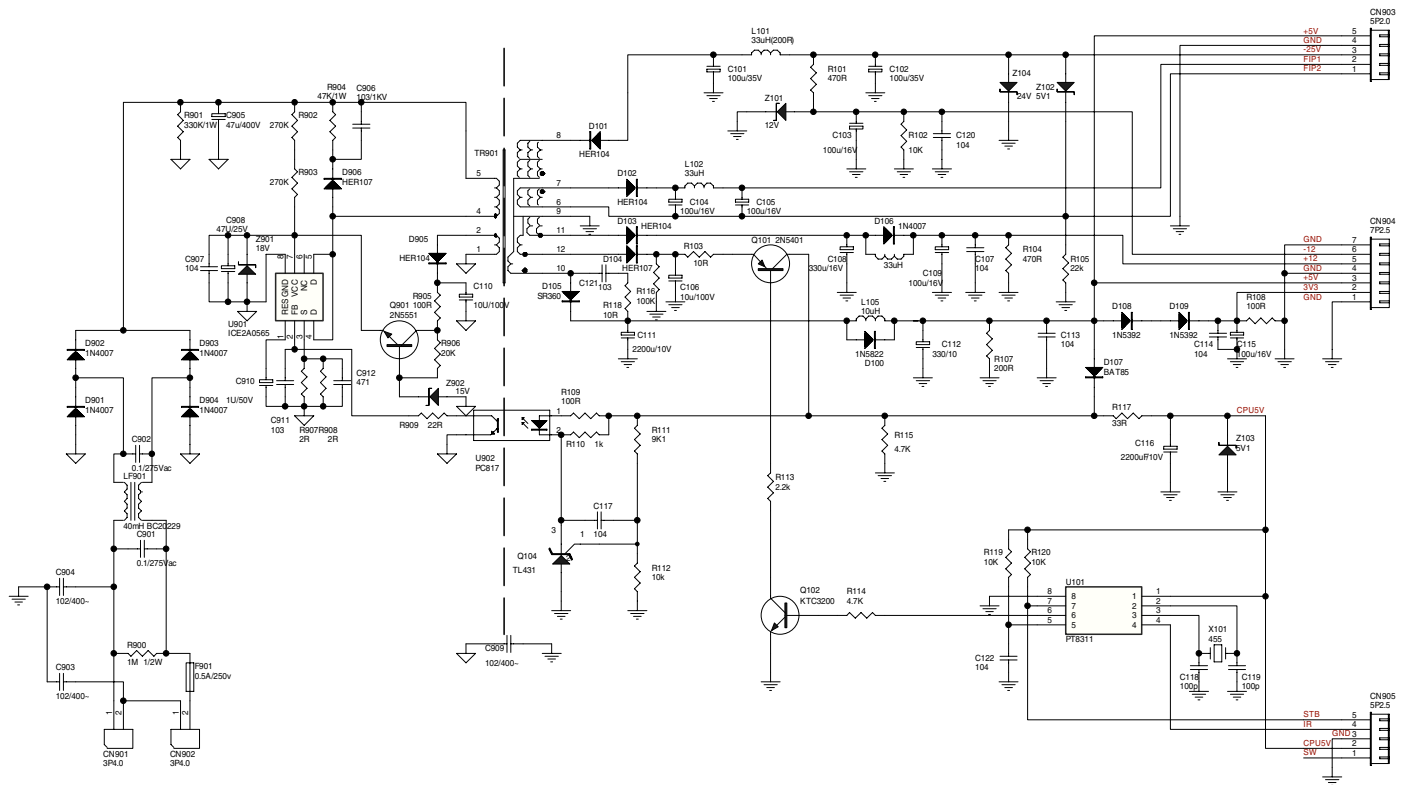
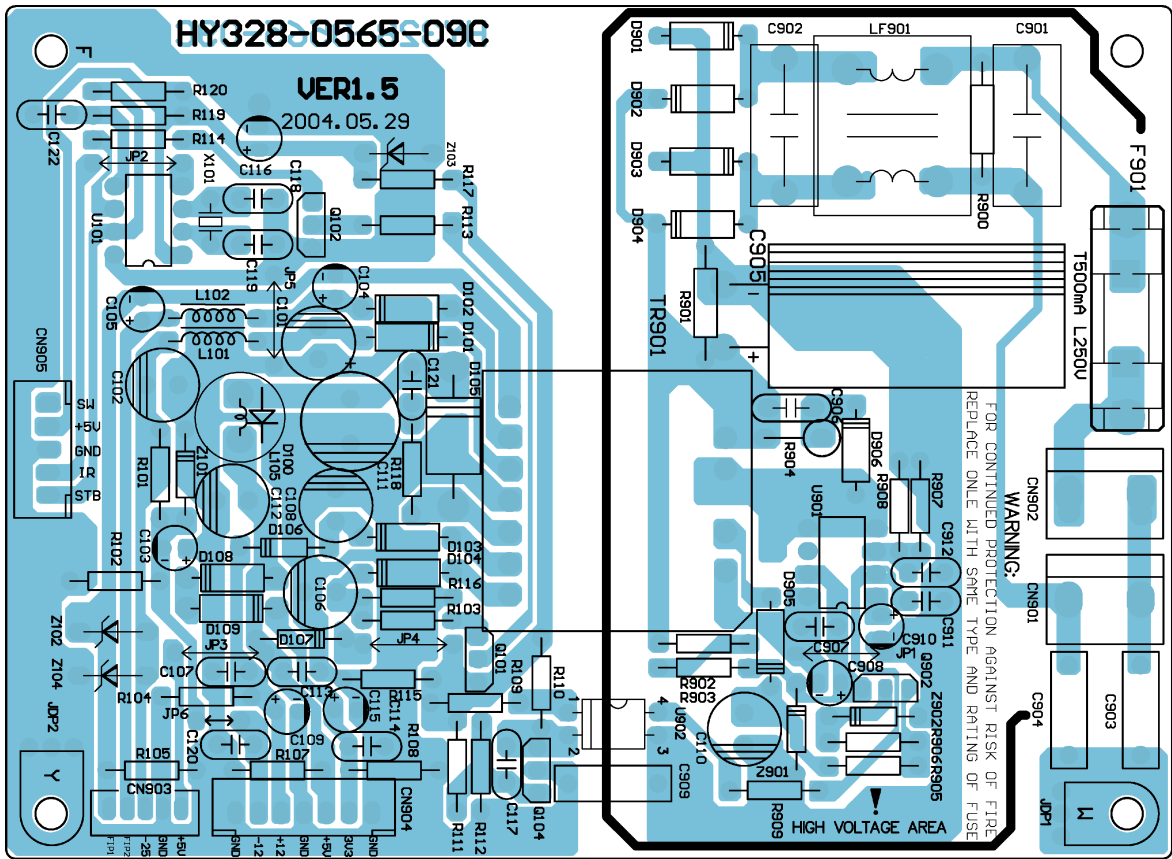


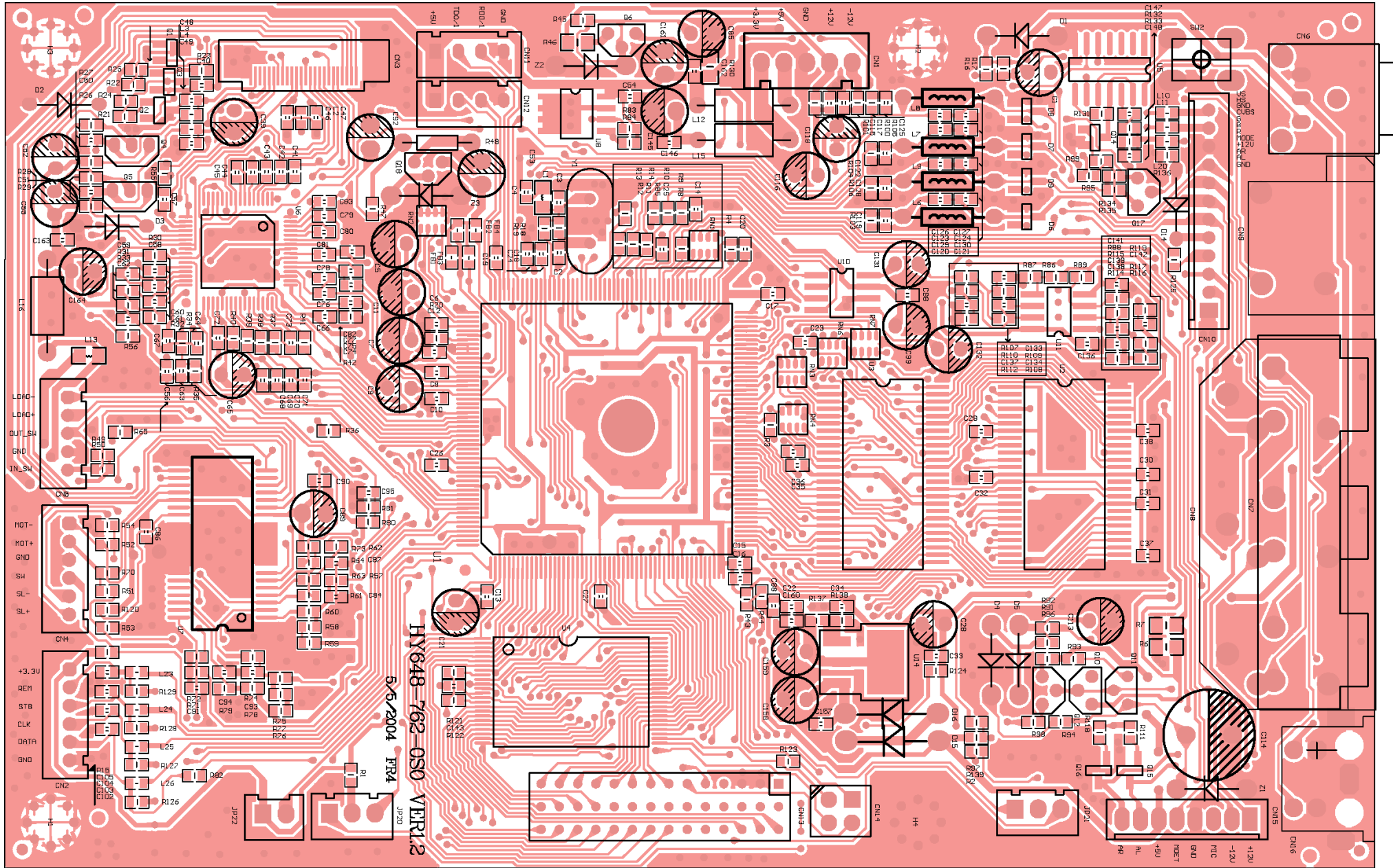
Es gelten die Vorschriften und Sicherheitshinweise gemäß dem Service Manual "Sicherheit", Materialnummer 720108000001, sowie zusätzlich die eventuell abweichenden, landesspezifischen Vorschriften!

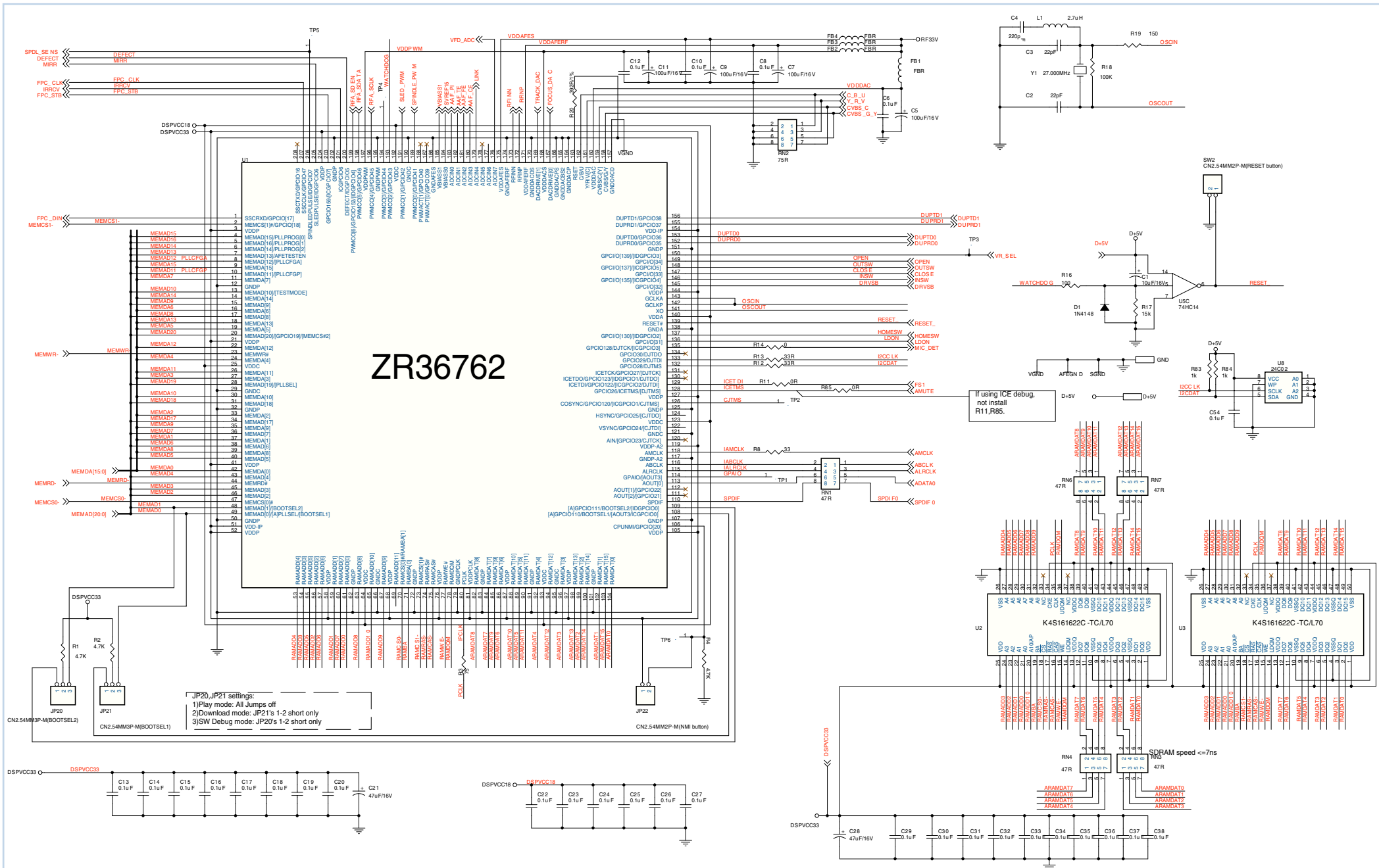


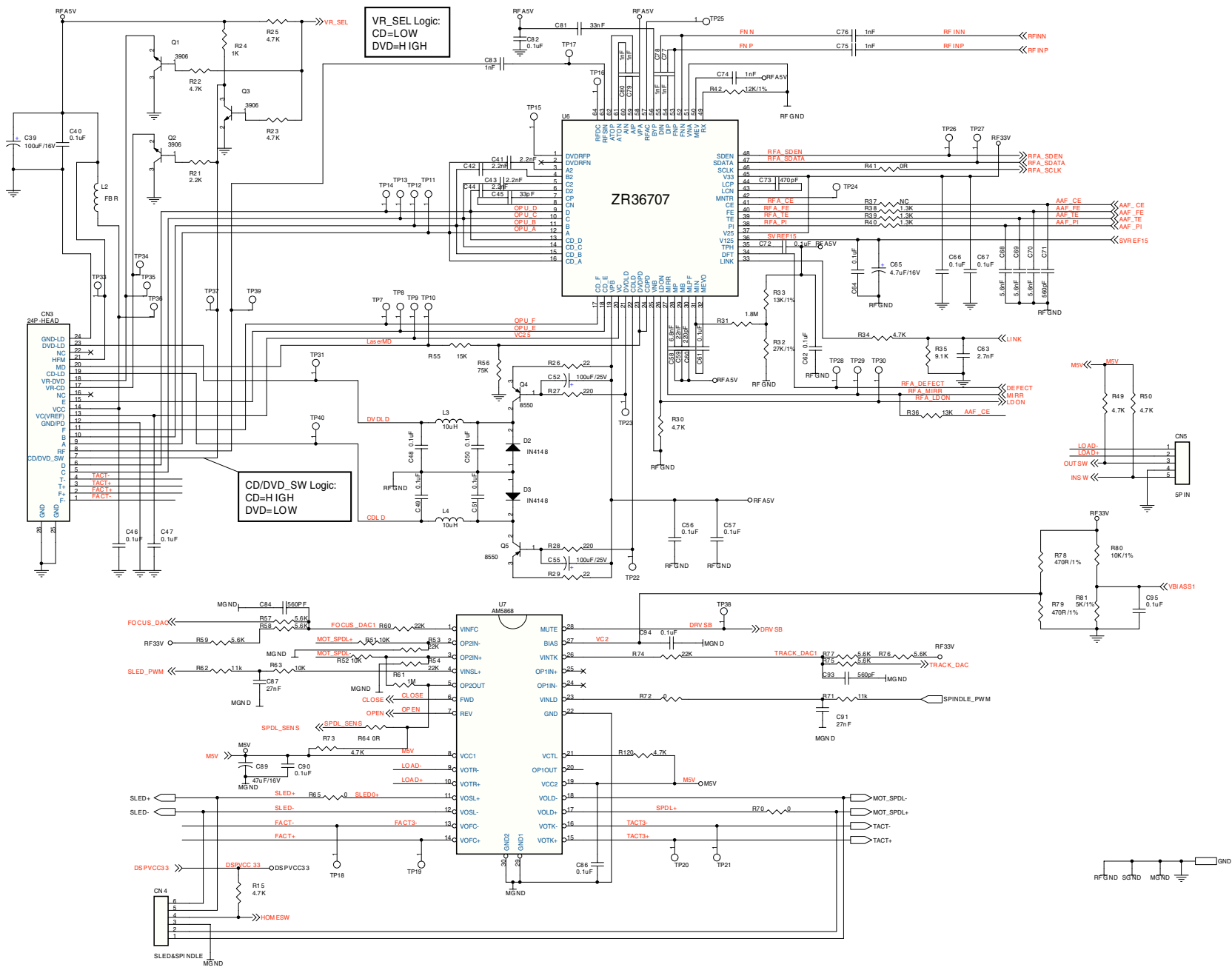
The regulations and safety instructions shall be valid as provided by the "Safety" Service Manual, part number 720108000001, as well as the respective national deviations.

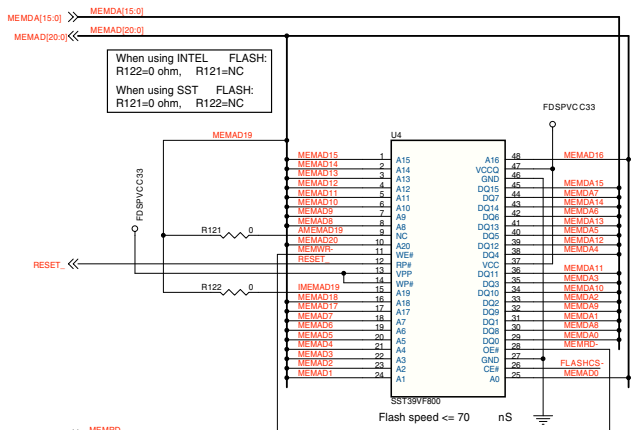






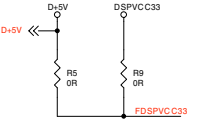
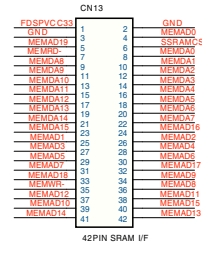




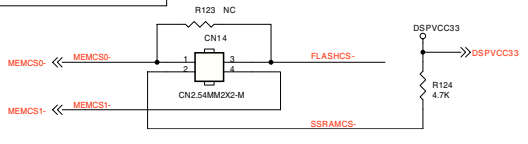


FDSPPVC33
C143
0.1uF

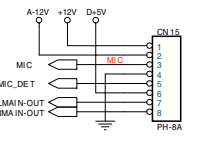
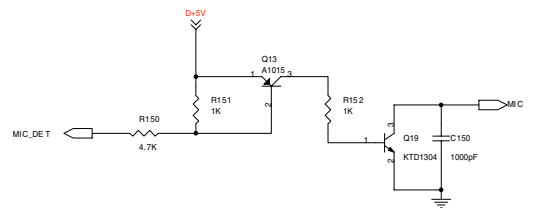
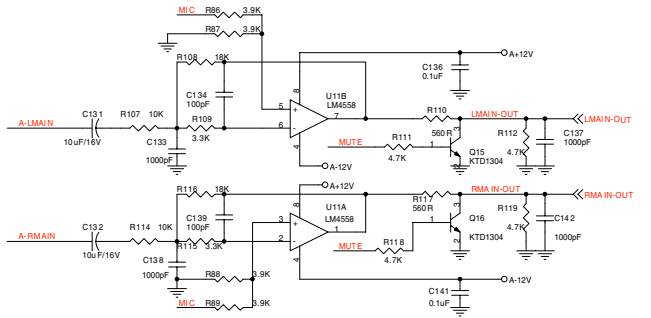
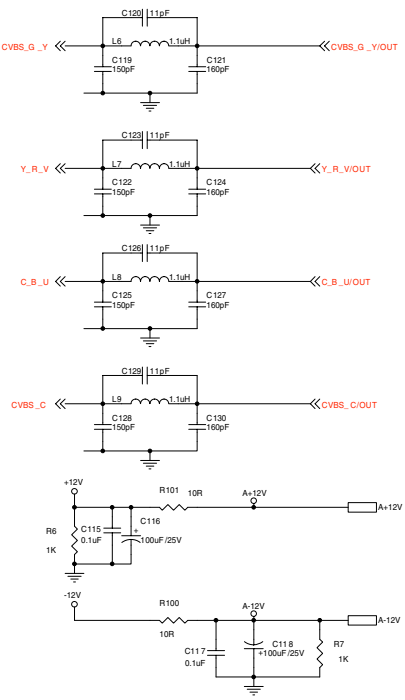
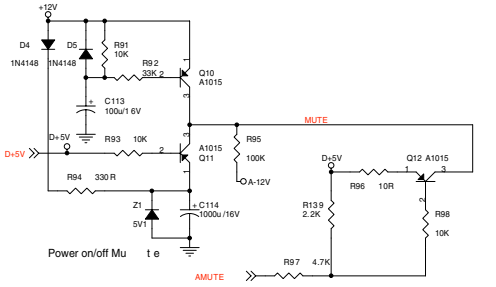
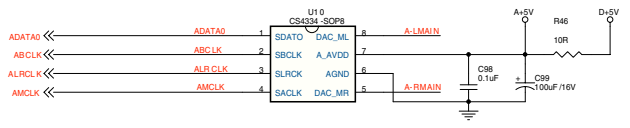
JP1 :
a)Flash memory(U4) : 1-3 short only
b)External SRAM (cn14) : 1-2 and 3-4 short

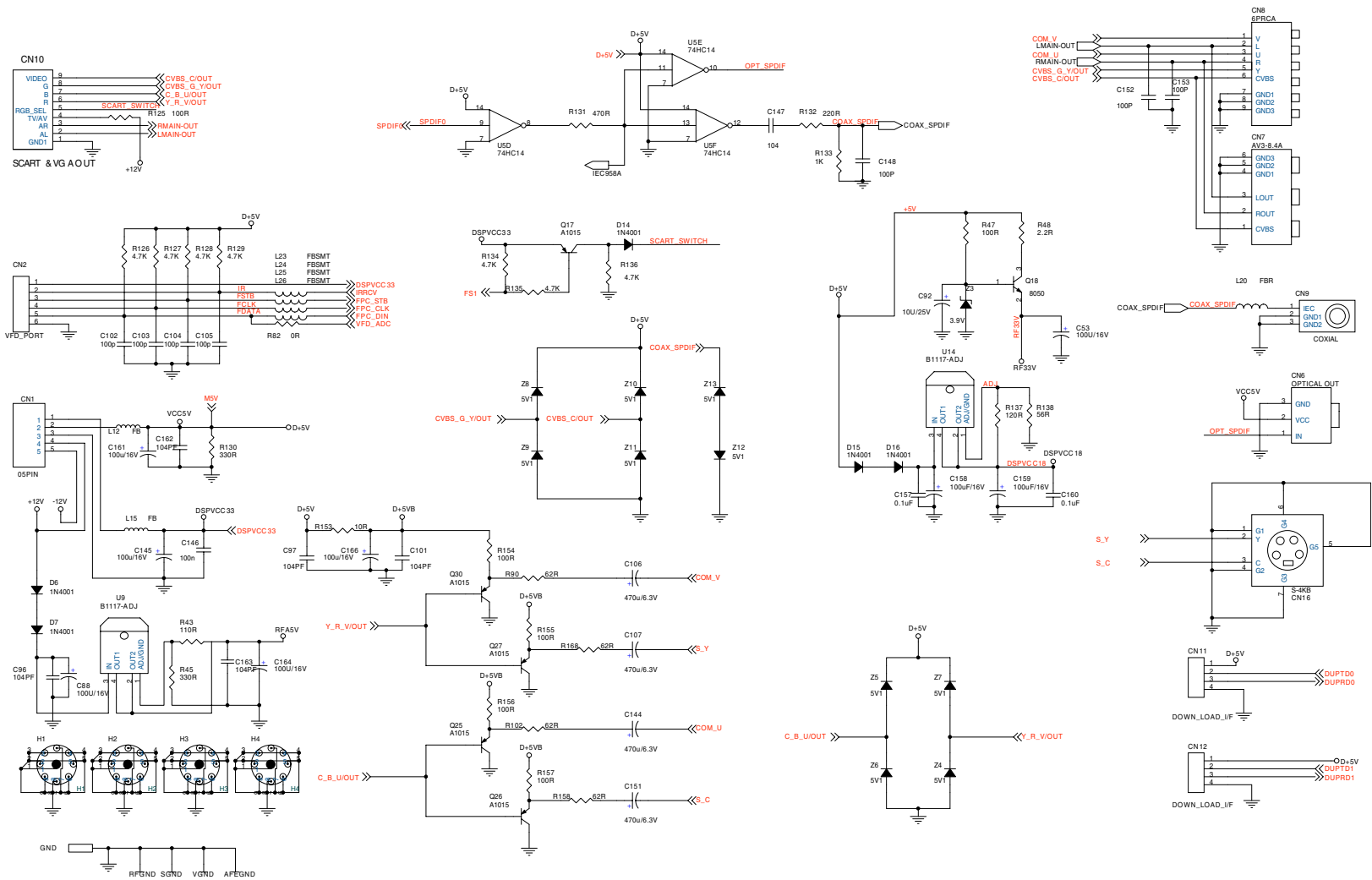


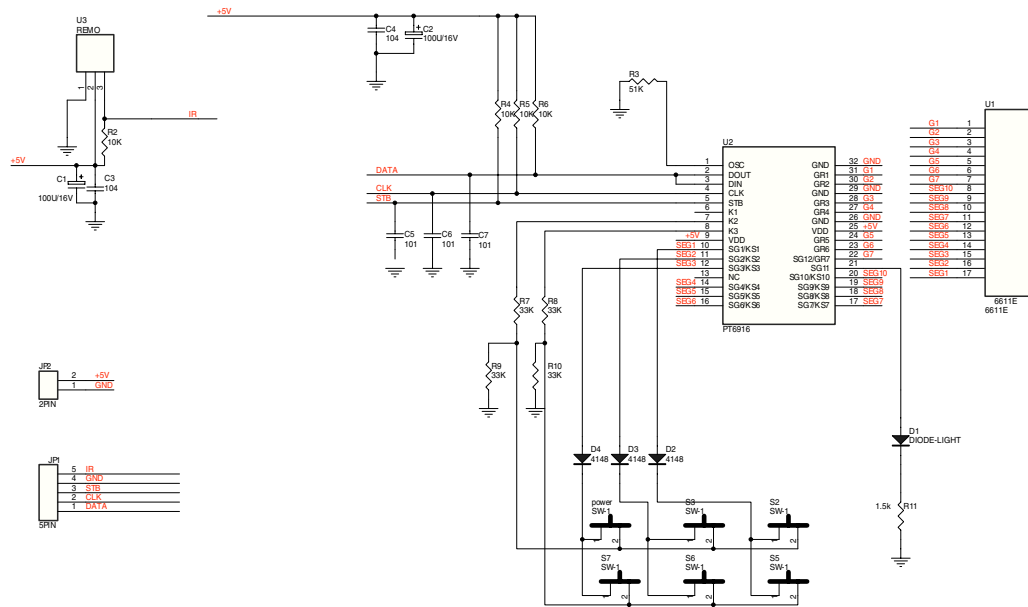
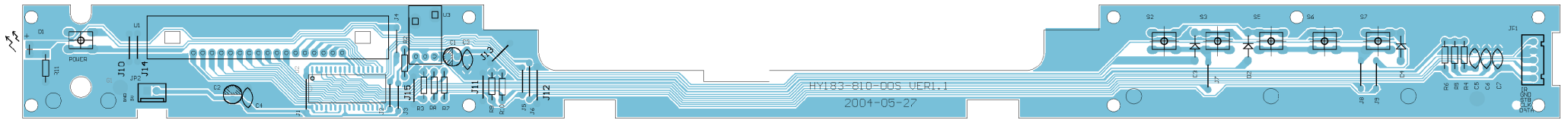
EXTERNAL SRAM PORT

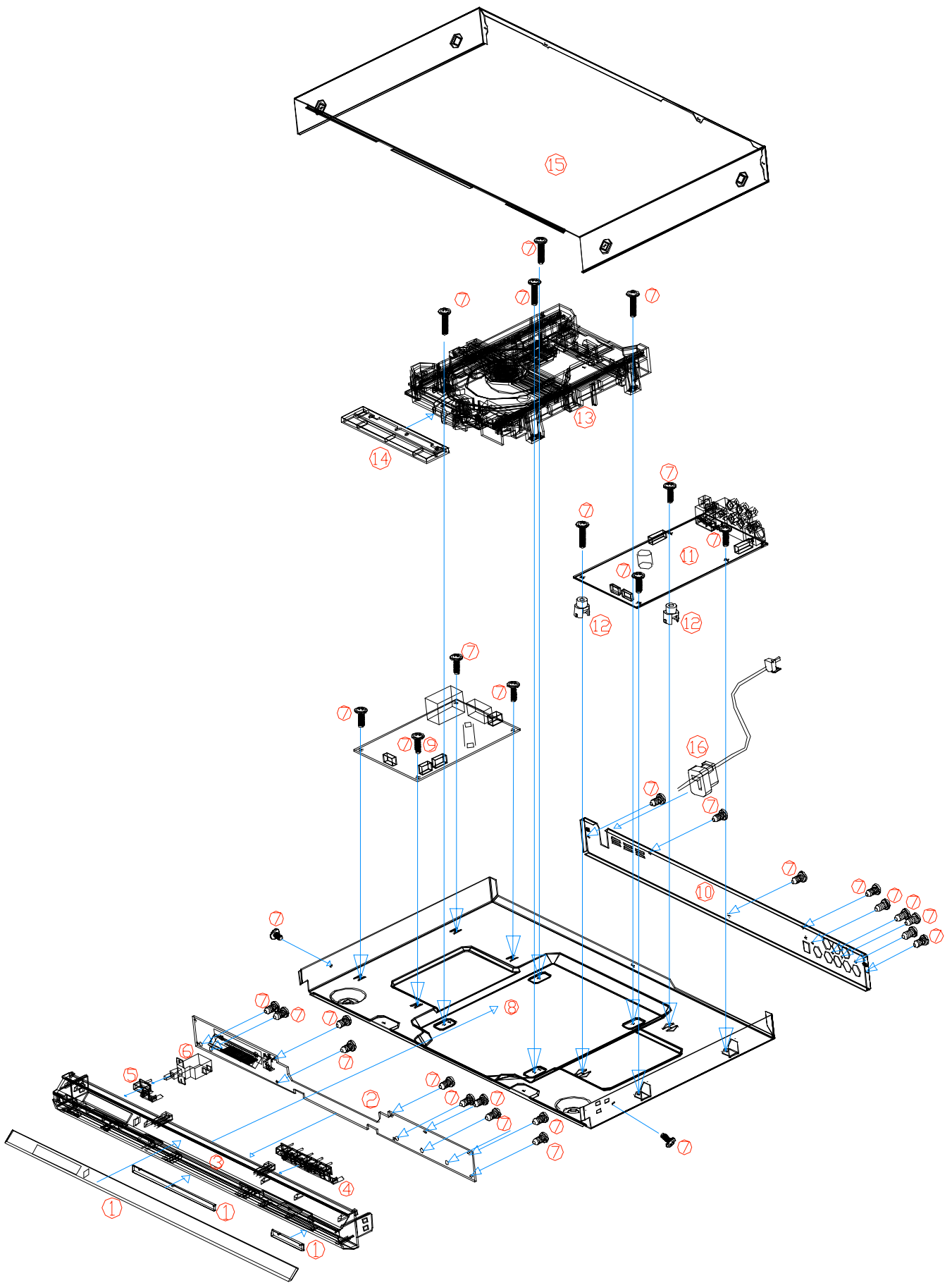


MEMRD- MEMRD-
MEMWR- MEMWR-









GRUNDIG

Ersatzteilliste Spare Parts List

DVD

6 / 2004

GDP 1400

MATERIAL-NR. / PART NO.: 774010725100
BESTELL-NR. / ORDER NO.: GMK2800

POS. NR. POS. NO.	ABB. FIG.	MATERIAL-NR. PART NUMBER	ANZ. QTY.	BEZEICHNUNG (D)	DESCRIPTION (GB)
		774010725100		GDP 1400 TAUSCHGERAET	GDP 1400 EXCHANGE SET
0001.000		720117134900		FERNBEDIENUNG TP 86 D	REMOTE CONTROL TP 86 D
		720116037000		BEDIENUNGSANLEITUNG D	INSTRUCTION MANUAL D
		720116037100		BEDIENUNGSANLEITUNG GB	INSTRUCTION MANUAL GB
		720116037200		BEDIENUNGSANLEITUNG NL	INSTRUCTION MANUAL NL
		720116037300		BEDIENUNGSANLEITUNG I	INSTRUCTION MANUAL I
		720116037400		BEDIENUNGSANLEITUNG F	INSTRUCTION MANUAL F
		720116037500		BEDIENUNGSANLEITUNG P	INSTRUCTION MANUAL P
		720116037600		BEDIENUNGSANLEITUNG DK	INSTRUCTION MANUAL DK
		720116037700		BEDIENUNGSANLEITUNG S	INSTRUCTION MANUAL S
		720116037800		BEDIENUNGSANLEITUNG PL	INSTRUCTION MANUAL PL

HINWEIS !

IM DEFEKTFALL SENDEN SIE BITTE
IHR GERAET AN FOLGENDE ADRESSE:

ISG INTERMEDIA SERVICE GMBH
BEUTHENER STR. 55
D-90471 NUERNBERG

NOTE !

IN CASE OF DEFECT PLEASE SEND
YOUR SET TO THE FOLLOWING ADDRESS:

ISG INTERMEDIA SERVICE GMBH
BEUTHENER STR. 55
D-90471 NUERNBERG

Es gelten die Vorschriften und Sicherheitshinweise
gemäß dem Service Manual "Sicherheit", Mat.-Num-
mer 720108000001, sowie zusätzlich die eventuell ab-
weichenden, landesspezifischen Vorschriften!



The regulations and safety instructions shall be valid
as provided by the "Safety" Service Manual, part
number 720108000001, as well as the respective
national deviations.

ÄNDERUNGEN VORBEHALTEN / SUBJECT TO ALTERATION